

DIGITAL SATELLITE METER

THE PROFESSIONAL EQUIPMENT

DIGITAL
SATELLITE
METER

THE PROFESSIONAL EQUIPMENT
USER'S MANUAL

CONTENTS

Product Description

1. Guide	2
1.1 Face Panel & Button	3
1.2 Power On/Off	4
1.3 Power Supply & Battery	4
2. Menu	4
2.1 Channel Scan	5
2.2 Channel Check	9
2.3 Multimedia	12
2.4 System Setup	14
2.5 Spectrum	16
2.6 Constellation	18
2.7 Shortout Buttons	20
3. Specifications	24
4. Warning	25
5. Product Standard Package	27

Product Description

Using WS6918 can receive DVB-S and DVB-S2 signal. It's very convenient for installer to catch quick and accurate alignment for antenna to the best position.

WS6918 uses microprocessor controller with reliable and stable performance. When it is turned on, channel picture, signal strength and signal quality will be showed on LCD screen. And also big menu window can be selected for data figure.

WS6918 displays EL/AZ, CBER/VBER, S/N, signal strength and lock sound alarm.

WS6918 has the functions to test spectrum analyzer and show the chart of constellation.

WS6918 can detect very weak signal and provide antenna power (OFF/13V/18V). It's with auto-protection for LNB short-circuit.

WS6918 has the AV in and AV out function.

WS6918 uses the 12V power adapter. It includes 8.4V/3000MAH high capacity LI-ION battery which can work for more than 4 hours when it is fully charged.

1.GUIDE

1.1 Panel keypads



2 | Digita Satellite Meter

NO.	Name	Function
1	Signal Input	To connect it with external antenna
2	LCD Screen	To show menu and channel pictures...etc
3	Signal Lock Indicator Light	To lock signal when it lights
4	Charging Indicator Light	The light is on when it's charging; It's off when charging is complete.
5	Power Indicator Light	The light is on when meter is turned on
6	22K Switch Indicator Light	22K Switch is on when it lights
7	I3/18V Indicator Light	To show H/V switch output
8	F1 F2 F3 F4	Function Buttons
9	← → OK	Arrow for Cursor Moving OK for Confirmation
10	MENU	To show main menu or return to previous menu
11	EXIT	To cancel selection or exit from current menu
12	0-9 Numerical Button	To input numerical for setting parameters
13	+/- Button	To turn on or off sound indicator for signal strength
14	B.Light	LCD Screen Switch
15	Mute	Sound On/Off Switch
16	TV/Radio	Switch between TV Channel and Radio Channel
17	SCAN	Enter into Quick Search
18	INFO	To show parameter of current channel
19	USB Port	Port for Upgrade or connecting to multimedia
20	Power Connection port	Port for connecting to external power supply
21	Power Switch	Power Switch for machine power
22	AV Output	AV Output
23	AV Input	AV Input

1.2 Power On/Off

To turn on the meter when Power Switch moves to I position.

To turn off the meter when Power Switch moves to 0 position.

Please turn off the meter to charge the meter in time when system information for showing low power pops up.

1.3 Power Supply and Battery

It's used with 12V 1.5A Power Adaptor. It charges through external power when battery is out of power.

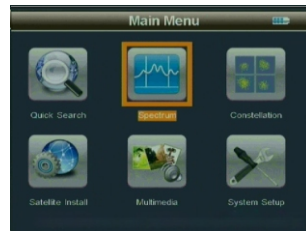
It's used with 8.4V 3000 mAH Lithium Battery. It needs 4 hours charging time by connecting power adaptor with external power or car charging. After it's full charge, it works for more than 5 hours (It also depends on the load of external antenna).

Notice: For initial charge, please make battery fully-charged(We suggest it charge for 5 hours).

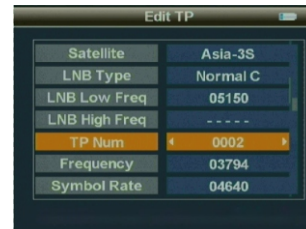
2.MENU

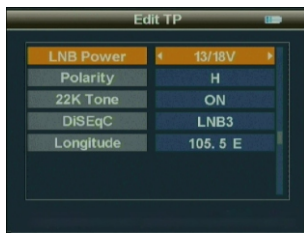
Press “MENU” key to enter into main menu, and

use Arrow key to move cursor, and then press “OK” key to select sub-menu.



2.1 Quick Search





2.1.1 Satellite Name

To select the satellite name for receiving signal

2.1.2 LNB Type

Select LNB Type

2.1.3 LNB Low Freq/LNB High Freq

Use the numerical button to input Freq Value for Local Freq

2.1.4 Frequency

Use the numerical button to input Freq Value for Down Freq.

2.1.5 Symbol Rate

Use the numerical button to input Value for

SYMBOL RATE

2.1.6 Polarity

Select Polar Mode

2.1.8 LNB Power

Select Polar Mode

2.1.9 22K Tone

Select 22K TONE(ON/OFF)

2.1.10 DiSEqC

To adapt the connect state of DiSEqC

2.1.11 Longitude

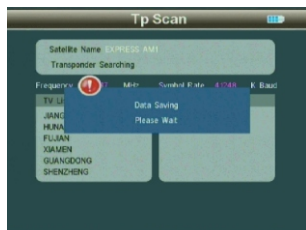
To show the selection of longitude of satellite

2.1.12 Set parameters, and press “OK” button to enter the Sub-menu, and then align direction of antenna according to the interface parameters.



2.1.12.1TP Scan

Scan all programs of the current frequency, and automatically store them after scanning, and then return back to the previous menu.



2.1.12.2 Scan All

Scan all programs of all channels and keep the programs automatically after finish the scan and then return to previous menu.

2.1.12.3Zoom

Use ◀ ▶ button to select Zoom, and press “OK” button to enter the Sub-menu, and then align the antenna position to reach the best state.

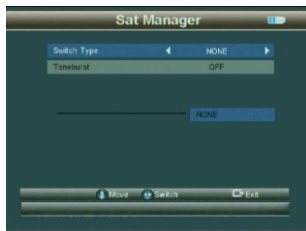


2.2 Satellite Install



2.2.1 Sat Manager

Press “OK” button to enter the Sub-menu, and then set connecting state.



2.2.2 TP Manager

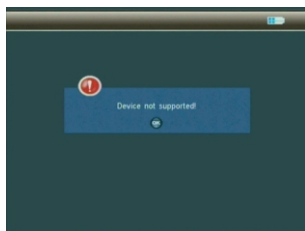
Press "OK" button to enter the Sub-menu



2.3 Multimedia

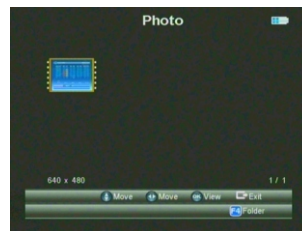


For Multimedia, the external memory should be inserted into USB port. Otherwise, “Device not supported” will pop up on the window.



2.3.1 Photo

Scan JPG picture.



2.3.2 My Music

Play MP3 music.



2.4 System Setup



2.4.1 OSD Language

Set OSD Language

2.4.2 My longitude

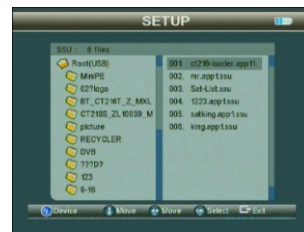
Press OK button, input My longitude. It is available to input numerical directly. To press left button, you can change to east longitude and right button to change to west longitude.

2.4.3 My Latitude

Press OK button, input My latitude. It is available to input numerical directly. To press left button, you can change to east latitude and right button to change to west latitude.

2.4.4 SW Update

To upgrade software or data through USB port. Store the upgrading file into the external memory and insert it into USB port and the enter will upgrade the menu. To select the upgrading file it will automatically return back to the previous menu after upgrade.



2.4.5 Set Default

Press OK button to set factory default.

2.4.6 GMT Usage

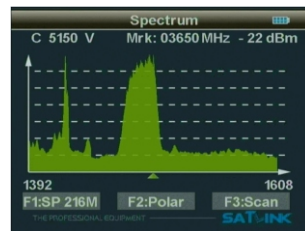
Set the GMT parameter

2.5 Spectrum

Press OK button and then enter spectrum parameter to set menu.parameter

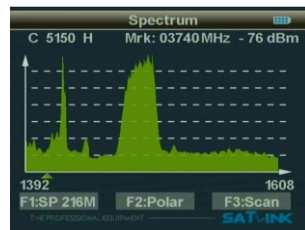


2.5.1 Frequency is the difference value between the downstream frequency and local frequency and the value range is 950---2150MHz. To set parameters according to requirements, and then press OK button to enter the chart of spectrum.

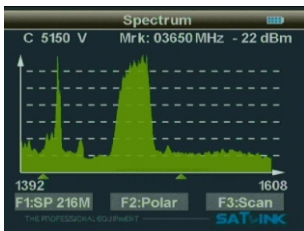


2.5.2 When the screen appears the spectrum, press F1 button to change bandwidth and press F2 to change the polarity.

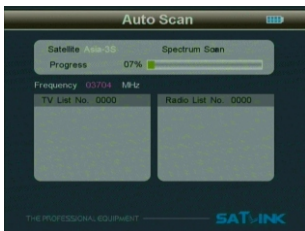
2.5.3 To select the beginning frequency to scan and press F3 button then press OK button.



2.5.4 Press left and right button to move the cursor to the end frequency of the scanning.

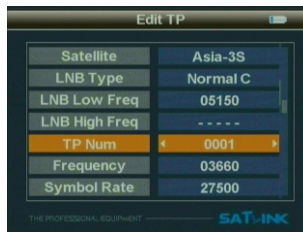


2.5.5 Press OK button to enter the selected frequency range to scan the programs. When finished, exits the menu.

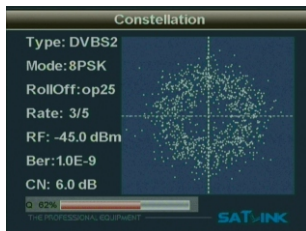
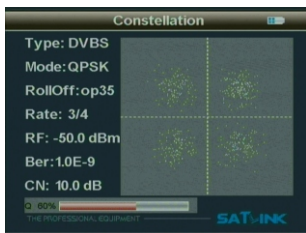


2.6 Constellation

Press OK button , then enter the constellation parameter to set menu.



2.6.1 To set parameters according to the requirements, press OK button to enter the constellation chart parameter. To show signal parameter DVB-S (QPSK) 、 DVB-S2 (8PSK) according to the parameter of satellite finder.(For the same satellite, different transponders show different signal strength, the signal of DVB-S (QPSK)) is stronger than DVB-S2 (8PSK)

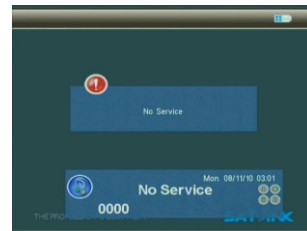


2.7 Shortcut Function

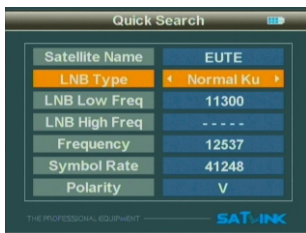
2.7.1 Press the OK button to enter the sub menu when it's playing programs and make operations according to the instruction.



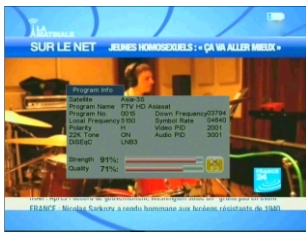
2.7.2 Press TV/Radio to select programs between TV and Radio when it's playing program.



2.7.3 Press the OK button to enter the SCAN menu when it's playing programs and make operations according to the instruction.



2.7.4 Press the OK button to enter the INFO menu when it's playing programs and make operations according to the instruction.



2.7.5 Press “ -/+ ” button to turn on or turn off Signal Lock Sound to show the signal strength.

2.7.6 Press MUTE button to turn on or turn off the sound.



Specifications

System	Fully DVB compliant	yes
LNB input	connector	F type feminin
	frequency range	950MHz-2150MHz
	signal level	-65dBm~-25dBm
	LNB power supply	13/18V, max 350mA
	LNB switch control	22KHz
Demodulator	DiSEqC	Ver 1.0/1.1/ 1.2
	Front end	QPSK 8PSK
	Modulation range	2Mbps~45Mbps
	SCPC/MPC	both yes
System resource	processor	16bit processor (133MHz)
	FLASH	8Mbyte
Vedio decoder	SDROM	4*16Mbyte
	MPEG 2	MP@ML
	Data rate speed	up to 15M bits/s
	Resolution	720*576, 720*480
Audio	Vedio format	PAL/NTSC/SECAM
	MPEG 1 &2	
	Type	Mono
Data interface	sampling rates	32, 44.1 KHz
	connector	USB
Power supply	LI-ION battery	3000 mA
	Supply voltage	8.4Volt
	Charger	100-220V
Physical characteristics	Measurement	9.5x15.5x4.5 (cm)
	Weight (net weight)	0.5 Kg

Handing Precautions and Prohibitions of Battery in Sat Meter

Warning:

一、 You are using Lithium ion batteries and Lickel metal hydride batteries. So Please don't work under high temperature or high pressure condition. If the following items happened, abnormal chemical reaction may occur which will lead to the battery overheat, emit smoke, ignite and/or burst.

1. Incinerate and dispose the battery in fire or heat it.
2. Pierce the battery with a nail or other sharp objects. Strike it with a hammer or step on it.
3. Immerse the battery with water or connect the positive (+) and negative
4. Connect the positive (+) and negative (-) terminals with other metal objects, such as necklaces hair pins and so on.

The battery is only applicable to the charger which supplied or appointed by the manufacturer of this machine.

(二) The battery is only applicable to the charger which supplied or appointed by the manufacturer of this machine.

1. The battery should be stored within a temperature range of 0°C to 40°C.
2. The battery is expendable. When stored for a long time, charge the battery at least once per half month so as to prevent over discharge.

Handling:

Please use the battery only supplied by the manufacturer, otherwise it will destroy the battery.

Please do not put the battery in fire or dispose it together with garbage.

Please contact the waste administrative institute to cope with waste battery carefully.

5.Product Standard Package



AV cable



Car charger cable



Power



Carrying case