

# **MDVR Manual (Application)**

# Directory

1 Frontpanel and backpanel and MDVR installation instructions .....	3
1.1 Description of front panel .....	3
<b>1.2 Backpanel interface specification</b> .....	4
<b>1.3 wiring instructions</b> .....	5
1.3.1 the AV video and audio input line shows .....	5
1.3.2 Power cord Description.....	5
1.3.3 I / O alarm input and output instructions .....	6
<b>1.4 MDVR check</b> .....	6
1 4.1 Open boxes and accessories checks.....	6
1 4.2 SD card installation instructions .....	7
2 remote control instructions .....	8
3 MDVR operating instructions .....	10
<b>3.1 the preview interface</b> .....	11
<b>3.2 video retrieval</b> .....	11
<b>3.3 video playback instructions</b> .....	13
4 3G network & platform using.....	13
4.1 3G network instructions.....	13
4.2 3G platform using instruction.....	15
4.3 3G Checking.....	17

# 1 Front panel/ Back panel and MDVR installation instructions

## 1.1 Description of front panel



Figure 1 Front panel indicator diagram

The front panel shows the following table:

Interface name	Screen printing	Details
Indicator	PWR	Power lights, lights when the power supply is normal
	ARM	Alarm indicator lights when an exception occurs when the machine
	REC	The recording indicator lights when the device is recording
	SD1	Video SD1 card indicator lights when the existence of the SD1
	SD2	Video SD2 card indicator lights when SD2 exists (depending on model)
	LOC	Electronic lock device while working to open the electronic lock, the system will uninstall the SD card, a minute later the system will automatically load the video
IR Receive	IR	Infrared receiver for receiving remote control signals

The front panel interface

description in Table 1.

## 1.2 Back panel interface specification



Figure 2 Panel interface diagram

Back panel connectors are described below the table:

Interface name	Machine screen printing	Details
Power Interface	POWER	The power input interface, which can be accessed DC8-36V
Printer port	MCU	Debugging information interface
I/O alarm Interface	I/O	Enter the vehicle speed pulse signal, the differential input RS232 and RS485 serial data communication interface Alarm Interface, 12V and 5V power output interface
Video and audio input interface	AV1, AV2, AV3, AV4	A pin is the positive power supply (+12 V), 2 feet of ground (GND), 3-foot audio input, 4 feet for the video input
Video output	Video Out	Video analog output interface, access CVBS TV and other display devices
Audio	Audio Out	Audio output

output		
--------	--	--

Table 2 Panel Interface

Description

### 1.3 wiring instructions

#### 1.3.1 AV video and audio input line shows

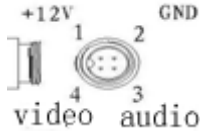


Figure 3 AV cable access diagram

#### 1.3.2 Power cord Description



Figure 4 Physical map of power input cable

Figure 4 shows the power cord, one end is 6PIN white plug then panel 6PIN white connector in the device. Red and black line is directly connected to the car battery. Red to positive pole, black to negative. The contact line of fire of the yellow line, the host device in the car to open the car keys automatically turn on automatic delay shut down, turn off the car keys. The yellow line is connected to the car keys to open all the dashboard lights that stalls (stalls) is the car to start the motor before.

**Note:**

- 1) Connect the need to make sure the battery voltage between 8 V – 36 V or more than burn equipment;
- 2) Connect the line to pay attention to the insulation between the power cord to prevent the power cord short circuit burned out the battery.

- 3) Yellow line must be connected to the firing line, otherwise the device will not support the delayed shutdown, the final video will be lost.
- 4) Note: The car installation must have direct access from the battery positive and negative, can not do with car Ground which will produce negative pulses interfere with the normal operation of the host. Positive and negative power wire size must be a  $\Phi$  of 1.5 mm or more.

### 1.3.3 I / O alarm input and output instructions

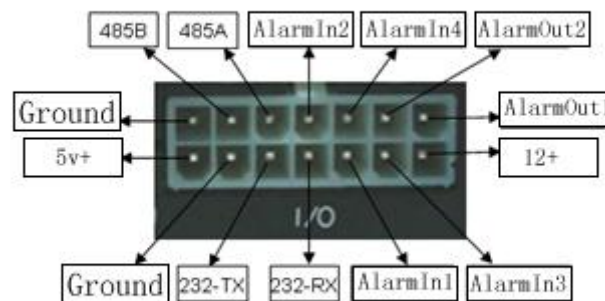


Figure 5 Alarm Interface Definition

The device has 4 alarm input interface, and two alarm output interface. Alarm input detection level detection, can be accessed by a variety of vehicles driving status, such as braking, steering, horn, etc.

Alarm outputs are power level output drive capability of 200mA, if you want to drive power is relatively large devices, must be an external relay.

## 1.4 MDVR check

### 1.4.1 Open boxes and accessories checks

Out of the box, check the host whether deformation or other damage to the nature of the subject to please stop using and to get in touch with your supplier.

Packing List		
ID	ITEM	NUM
1	1004S Machine	1
2	IR Remote	1
3	Power cord	1
4	AV input and output lines	4
5	Card key	2
6	Other	

Table 3 Packing List



Figure 6 Annex physical map

The definition of video and audio cable: red line for the 12V positive, black wire is ground negative, yellow line audio cable video cable, the Green Line

#### 1 4.2 SD card installation instructions

SD card on the motherboard from the host front-end can be inserted into the SD card. SD card at the SD card port and press in place (when you insert the SD card to pay attention to positive and negative, negative downward).

## 2 remote control instructions



Figure 7 physical map of the remote control

MDVR product panel has no direct control button on the need to use the remote control with the operation.

Remote control buttons and functions are introduced:

A numeric keypad:

[0-9] key: setting status, digital input keys used to select the numbers.

1,2,3,4 keys for switching between channels in the playback and preview

[+] [-] Key: increase or decrease of the adjusted figures.



(2) Set the menu navigation:

▲, ▼: Under the cursor moving key;












◀, ▶: Left and right cursor direction keys;

[ENTER]: In the set state, said the selection and preservation;

Other function keys as follows:

 Shutdown	In the preview screen, press this key organs of the machine (soft-off button)
 LOGIN	When a password in the MDVR, press the LOGIN button to enter the password.  Since the system is not restored and reset functions, please



	<p>remember the password;</p> <p>Not provided with a password, press LOGN can visit the main page;</p>
 INFO	<p>Information view, press to quickly view the configuration information such as GPS, 3G and other modules;</p>
 Swastika key The number keys 1, 2, 3, 4	<p>Press the key to display the four screen on the monitor screen is used to switch between the four-screen and single screen;; press the number keys 1, 2, 3 and 4, respectively, to switch to a single screen CH1, CH2, CH3, CH4,</p>
 RETURN / CANCEL	<p>Return to the previous layer of sub-menu. Eventually exit the setup menu and exit to the monitor screen;</p>
 PAUSE / the STEP	<p>Suspend play and put the key frame (frame put: a single picture playback, a picture according to time playback), press the play like the key to return to normal playback speed playback of video data;</p>
 GOTO	<p>Jump to a specified point in time in the playback of the video to start playing</p>
 PLAY	<p>To start playback (screen paused still picture);</p>
 FWD	<p>Playback video files fast forward button, a fourth gear: 2X, 4X, 8X, 16X</p>
 REW	<p>Playback of image files and rewind buttons, a fourth gear: 2X, 4X, 8X, 16X</p>
 STOP	<p>Stop the manual recording button</p>
 RECORD	<p>To start manual recording button.</p>
 NEXT	<p>In the playback of video files slow release button, a third gear: 1/2, 1/4, 1/8;</p>

AUTO, PRESET, RECALL, ZOOM +, ZOOM-, FOCUS +, FOCUS-, the IRIS, the IRIS-PTZ, BRUSH	PTZ function key
F1, F2, F3,	Spare key, customers can be customized features

Table 4 Description of remote controller keys

### 3 MDVR operating instructions



Figure 8 main menu

Each menu item corresponds to the function defined as follows:

- <Video search>: search the hard disk / video files stored in SD card and playback operation;
- <Video>: audio and video parameters, set the video mode;
- <Feature set>: Set the alarm, PTZ, time, network;

- <System Information>: Displays the serial number, version number, MAC address, and other system information;
- <Vehicle>: set the vehicle license plate number, timer switch, WIFI;
- <Display Settings>: Set the monitor screen and the content of the video data, including the display of information, regional, color, volume, etc.;
- <Password management>: Set the machine password;
- <Exit>: exit the menu interface, returns to direct the monitoring interface.

### 3.1 Preview Interface

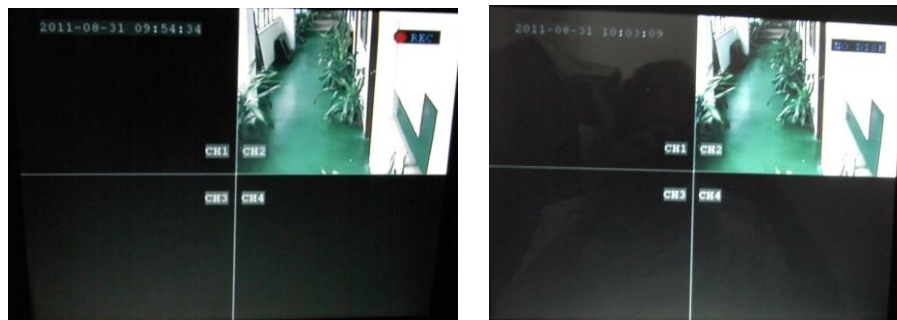


Figure 9 through the monitor screen card video card prompts Figure

Straight through the preview screen will display the message of the state of equipment and each channel state, the meaning of the message is as follows:

[2011-8 - 31 09:54:34] shows the system time

[CHx] channel name

[● REC] Said video recording is in progress

NO DISK], that there is no recording video

[The GPS: NO ...] when you press the remote control "INFO" key quickly to display system information, such as GPS and other state

### 3.2 Video retrieval

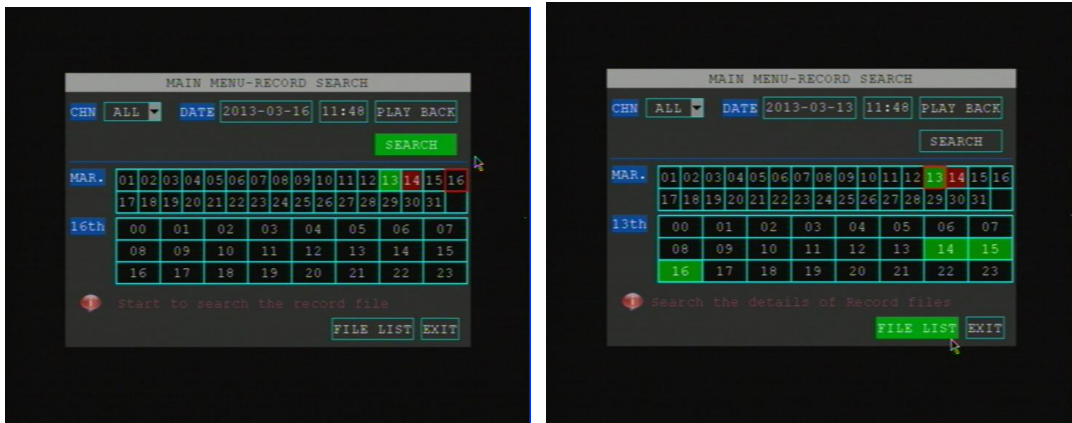


Figure 11 video retrieval map

And video retrieval interface to provide retrieval, playback and backup video files stored in the disk

- Retrieval methods can choose to fast and precise positioning of time, time period recording mode browsing detailed video file browsing.

**Instructions:**

1. Into the video search interface, click Search - file list directly to the current time by default, you can playback or read the video file.
2. Fast and precise positioning retrieval methods:
  - Enter the recording date and time you want to play (defaults to the last minute of the video search interface).
  - Recording mode color-coded, red for alarm recording time, green for ordinary video file time, no colors represent the time of the video files.
  - Month recording status in days, a half-hour daily recording mode.
  - The date of the recording mode selected video can playback the video of that time period.
3. The detailed video file browse and search the way:

- If the retrieved time video, then click **File>** button, to open more file browser interface, the list shows selected date video files, you can flip.
- Display content, including video files, start time, end time, file size, video type.
- Screening by record type file.
- You can select the video file, and select the video files are backed up.

### 3.3 video playback instructions

A single-channel playback and multi-channel synchronous playback in two ways.

2 player mode control, including:

- Select normal playback, single frame playback, slow motion, fast forward and rewind.
- Adjust the volume.
  - (1) Fast forward: 2X (2x)–16X (16x)
  - (2) Rewind: 2X (1 minutes back)–16X (Back 8 minutes)
  - (3) jump (GOTO): pop-up input box to display the change to play the beginning of the file (start) to end (end) time scope, the time edit box is set to jump time (must between start and end time), exit edit box, select OK.>, OK!

Such as:

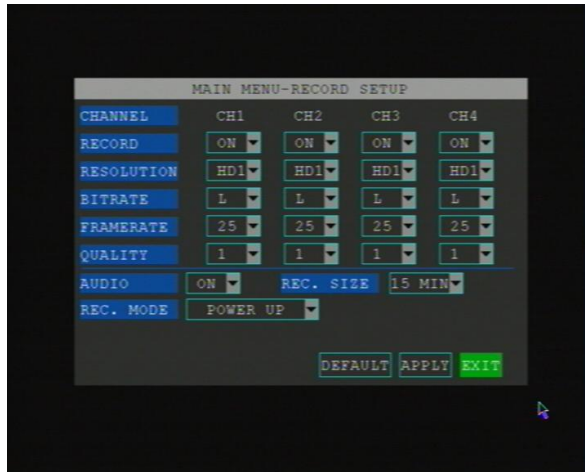
Start: [02:00:00] end: [02:30:00]

Editor [02:18:00] to determine after the jump to the time to play around [02:18:00]

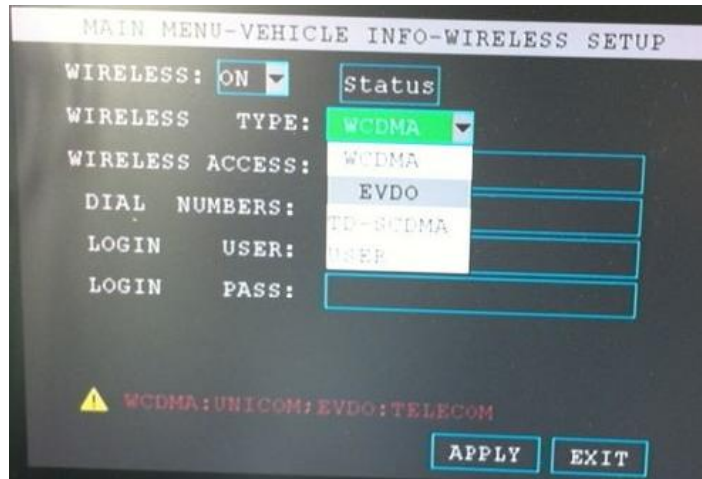
## 4 3G network & platform using

### 4.1 3G Network Instruction

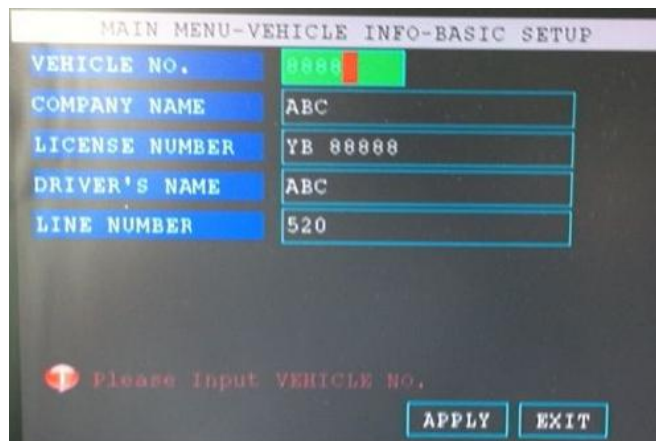
- 1) Confirming which Telecom operator you use ,China Telecom, China Unicom or China Telecom?
- 2) Inserting the 3G card (SIM card),make sure the 3G card balance)
- 3) Checking the 3G antenna is connected properly
- 4) The product's setting which need reconfirming



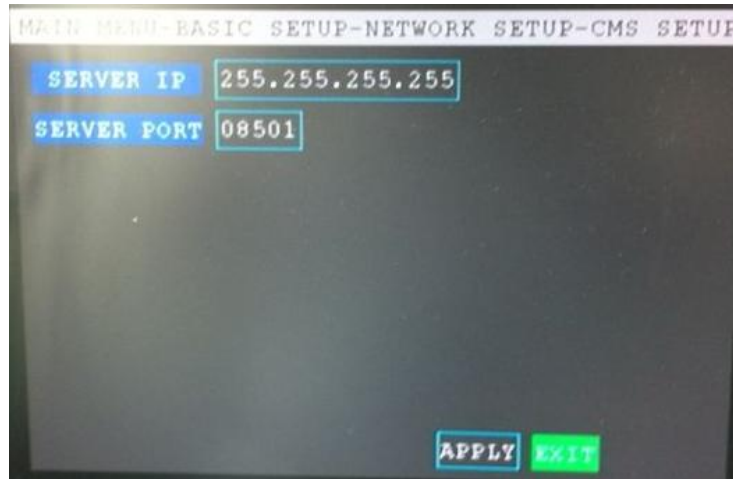
Main Menu-Record Setting- Small stream configuration. The remote 3G watching 's channel code need setting as open. The user could change different channels resolution (CIF or QCIF) and frame rate based on different condition



Main Menu - Vehicle management- Wireless internet access function need to set as open



Main Menu - vehicle management - basic setting, need to confirm with the supplier whether the vehicle number (such as 04017) assigns the correct



Main page - Settings - network to set the -CMS configuration, the supplier to confirm whether the center IP address is the correct IP port number is set correctly ?

5) Check the device if dial successfully?



Main page - vehicle management - wireless settings, check the wireless status if the IP display normally. If the IP address is blank, it means unsuccessfully setting; if IP address is 172.45.144.251, it means successfully setting

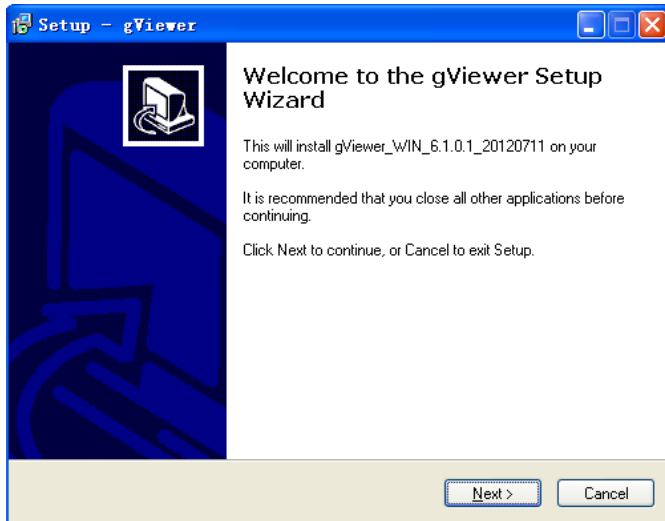
## 4.2 3G platform using instruction

1) installing client software

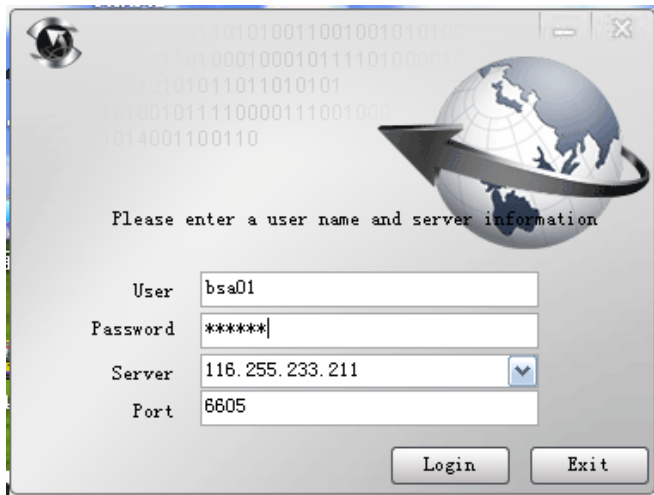
New client downloading address: <http://116.255.233.211/download.html>

Or ask the supplier to provide

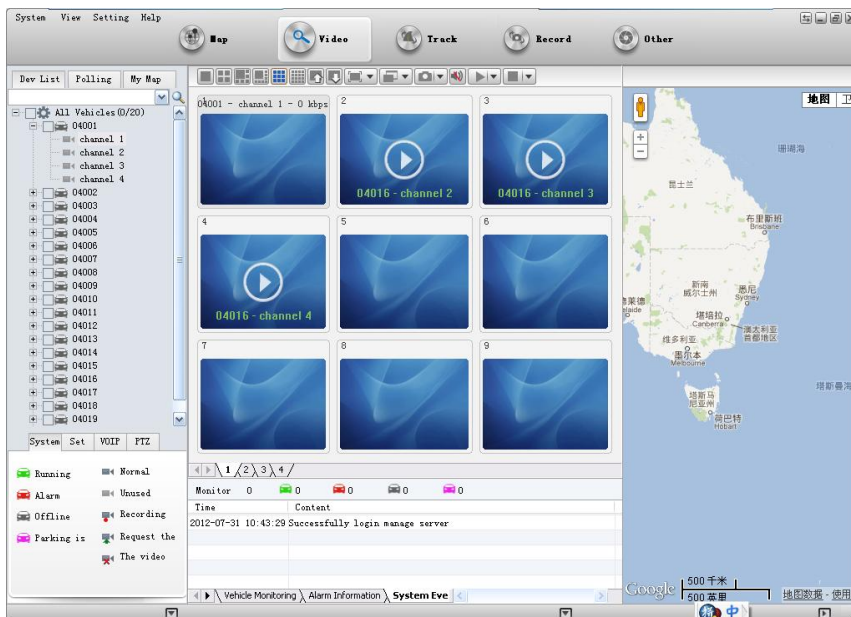
Please press Next STEP to install



## 2) Sign in



Ask the Supplier for administrator and pass word, the server and port



After a successful login, Double-click the device channel you will use



## 4.3 3G Checking

- 1) Checking if it dials successfully , recheck the IP you dial

```
C:\Documents and Settings\admin>ping 210.22.8.99

Pinging 210.22.8.99 with 32 bytes of data:

Reply from 210.22.8.99: bytes=32 time=4ms TTL=122
Reply from 210.22.8.99: bytes=32 time=5ms TTL=122
Reply from 210.22.8.99: bytes=32 time=9ms TTL=122
Reply from 210.22.8.99: bytes=32 time=8ms TTL=122
```

As above it is successful.

```
C:\Documents and Settings\admin>ping 210.22.8.98

Pinging 210.22.8.98 with 32 bytes of data:

Request timed out.
Request timed out.
Request timed out.
Request timed out.
```

As above means fail.

- 2) check the server IP (such as 116.255.233.211)

```
C:\Documents and Settings\admin>ping 116.255.233.211

Pinging 116.255.233.211 with 32 bytes of data:

Reply from 116.255.233.211: bytes=32 time=52ms TTL=117
Reply from 116.255.233.211: bytes=32 time=50ms TTL=117
Reply from 116.255.233.211: bytes=32 time=54ms TTL=117
```

If all works well. It means OK